

# Nokia Customer Care

## 5 - Disassembly Instructions

[This page intentionally blank]

**Table of Contents**

	<b>Page No</b>
<b>Disassembly Instructions</b> .....	<b>5</b>
General requirements .....	5
Detailed disassembly instructions .....	6
<b>Dome Sheet Placement</b> .....	<b>11</b>

[This page intentionally blank]

## Disassembly Instructions

---

### ■ General requirements

Use the correct ESD protection before handling the RM-17 product.

Use gloves to handle the RM-17 product.

Required tools:

- torx 6 screwdriver, for disassembly
- torx 6 torque-driver, set to 28Ncm torque for reassembly
- slotted screwdriver
- tweezers
- SS-42 camera removal tool
- SRT-6 opening tool
- DC-plug
- RJ-17 PWB soldering jig

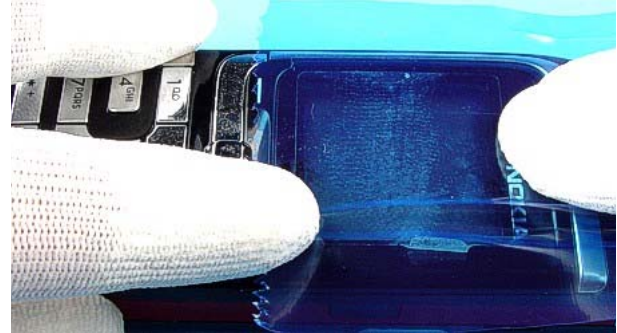
*Note: When shielding lids are removed from the shielding frames of the PWB, new lids must be used in order to close the shielding properly. It is not allowed to re-use the removed ones.*

*Note: The RM-17 phone has high gloss paint. The target customer-group is expected to be very sensitive to the appearance of the phone. Therefore, extra care must be taken when handling the covers. Use gloves when touching the product.*

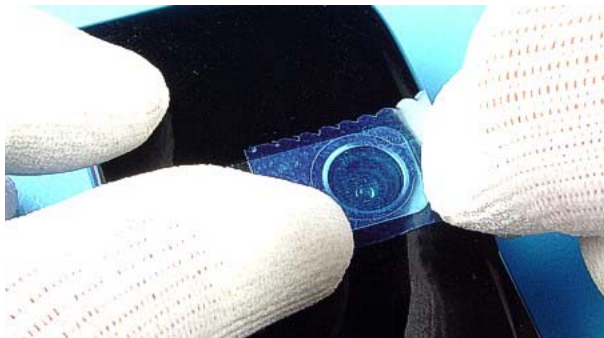
■ Detailed disassembly instructions



1. Needed tools for disassembly.



2. Protect the window with a film.



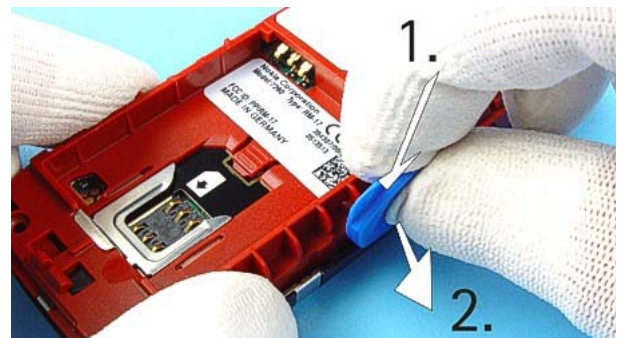
3. Protect the CAMERA WINDOW with a film.



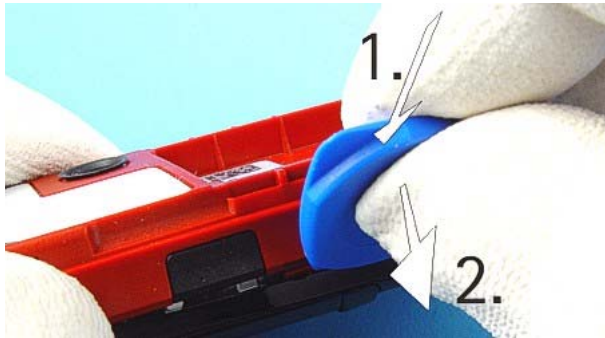
4. Press the C-COVER LOCK before pulling the C-COVER



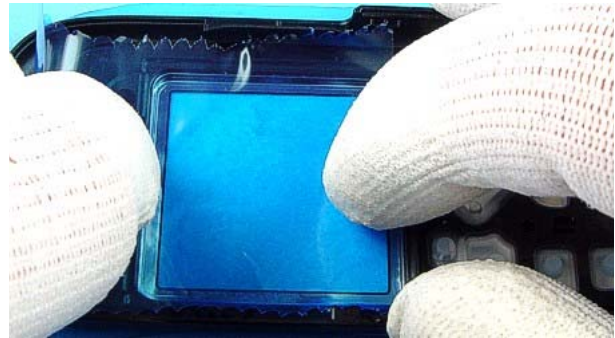
5. Unscrew the two Torx Plus® size 6 screws.  
**For assembly, the reverse order and a Torx Plus® driver with a torque of 28Ncm has to be used.**



6. Release the hooks of the A-COVER ASSY from B-COVER with SRT-6. First start with the VOLUME KEY side at the shown location and then ...



7. at the IRDA WINDOW side.



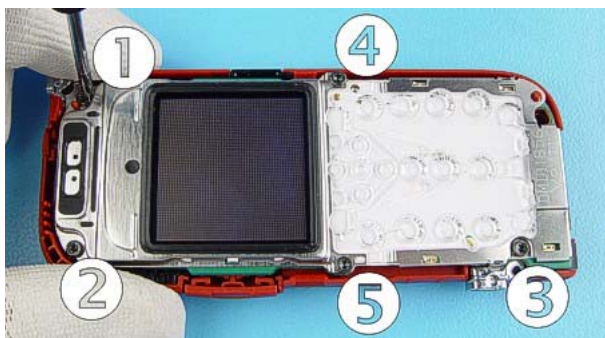
8. Protect the inner side of A-COVER with a film.



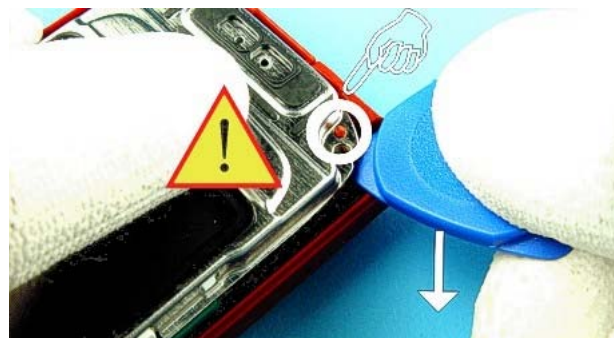
9. To remove the KEYMAT, use the SRT-6 to open the three snaps. Position **1.** = two snaps, position **2.** = one snap.



10. Now remove the KEYMAT from the A-COVER ASSY.

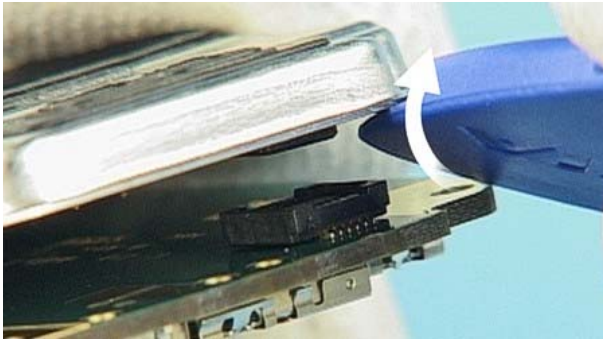


11. Unscrew the five Torx Plus® size 6 screws. **For assembly, the reverse order and a Torx Plus® driver with a torque of 28Ncm has to be used.**



12. Separate the module from B-COVER with SRT-6. Take care of the guide pin.

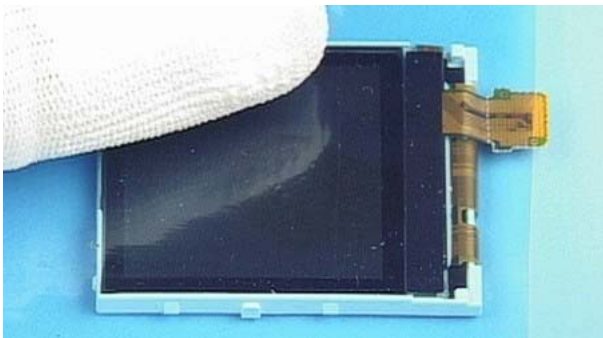




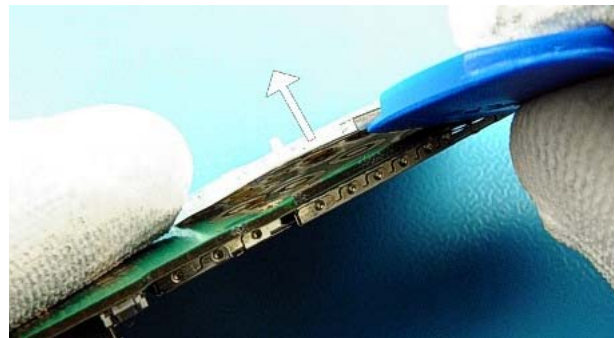
13. Open the LCD CONNECTOR carefully with SRT-6.



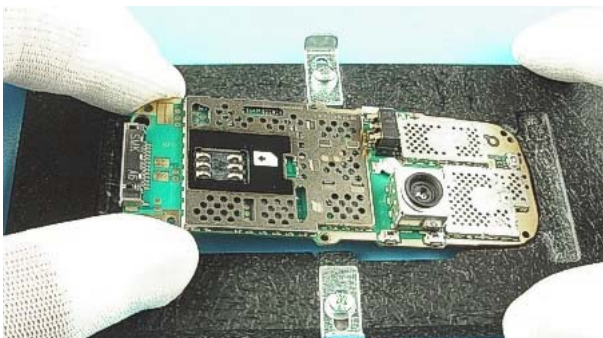
14. Use SRT-6 to separate the LCD-MODULE from the UI-SHIELD.



15. Protect the LCD-MODULE with a film.



16. When changing the LIGHT GUIDE ASSY use the SRT-6 as a lever. Keep in mind that the DOME SHEET is glued to the ENGINE MODULE.

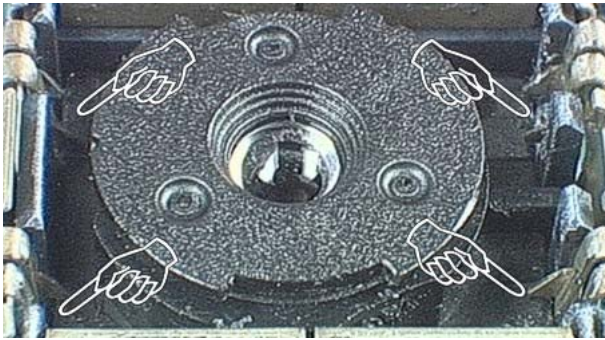


17. Put the ENGINE MODULE into the soldering jig.

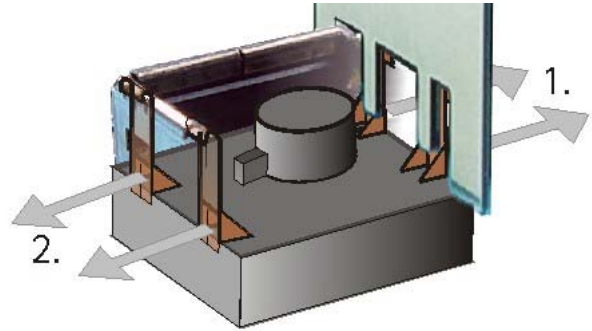


18. Use a slotted screwdriver as a lever to open the CAMERA SHIELD.





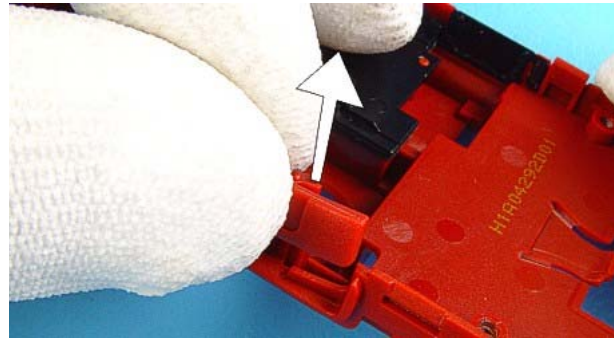
19. The CAMERA MODULE is attached with four double snaps into its guidance.



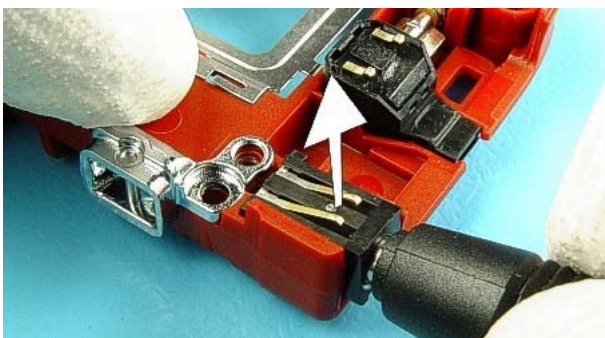
20. Place the removal tool as shown in the picture and unlock the snaps on both sides. Note the releasing order.



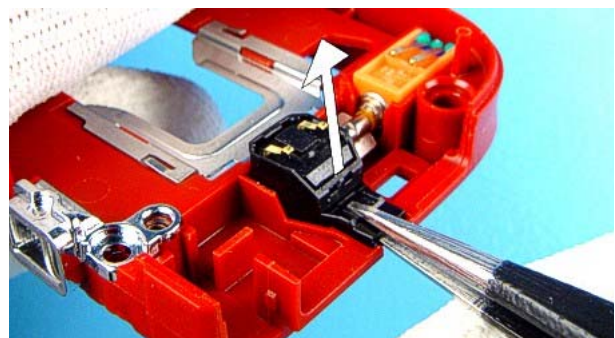
21. Remove the CAMERA MODULE with the SS-42 removal tool as shown in the picture.



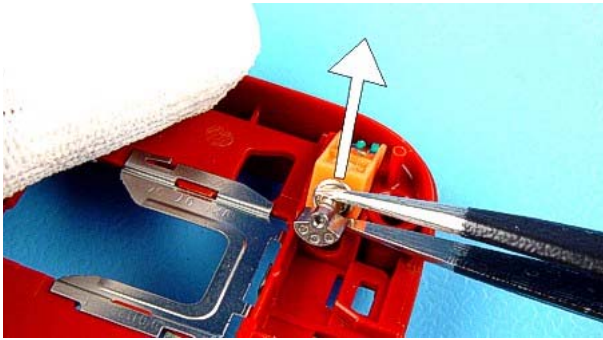
22. Remove the VOLUME KEY.



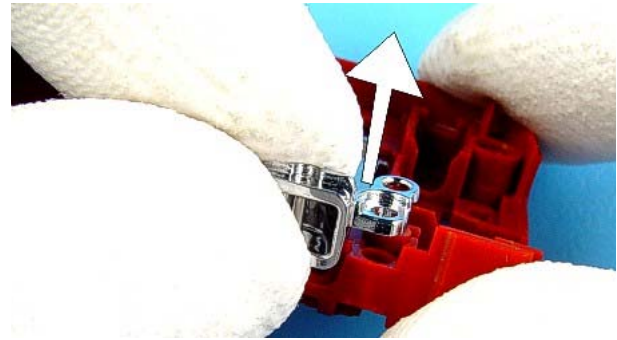
23. Use the DC-PLUG to remove the DC-CONNECTOR.



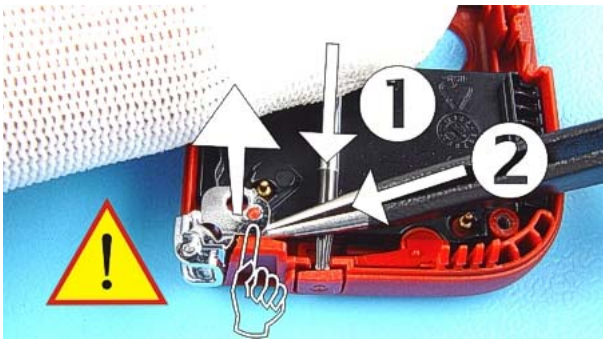
24. Tweezers can be used to remove the MICROPHONE.



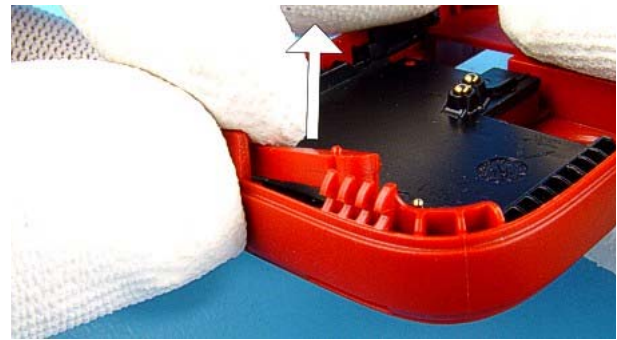
25. Tweezers can also be used to remove the VIBRA MOTOR.



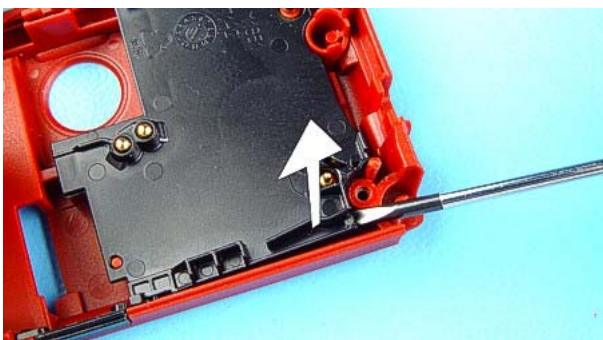
26. Remove the BUCKLE BOTTOM ASSY.



27. Use tweezers as a lever to remove the BUCKLE TOP ASSY. Note! Do not break or damage the guide pin.



28. Remove the POWER KEY.



29. To remove the IHF LID ASSY use a slotted screwdriver.



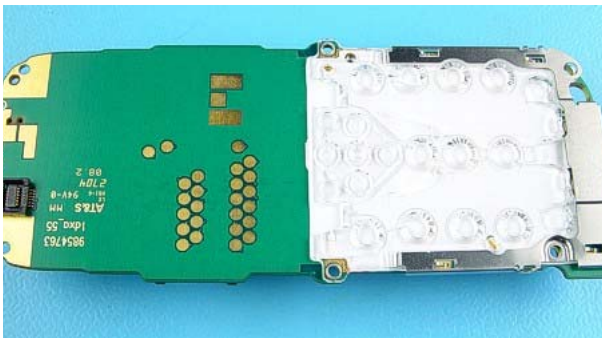
30. Remove the IHF SPEAKER with tweezers.



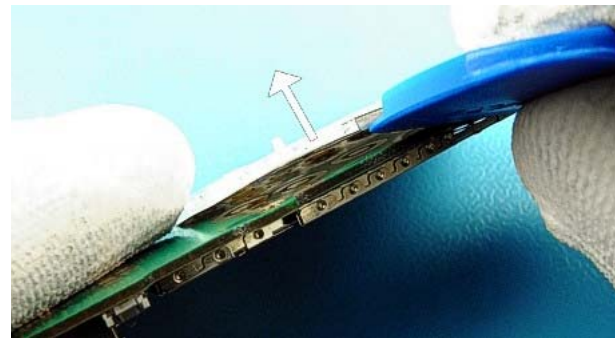
## Dome Sheet Placement

Since the dome sheet has to be removed before every soldering process a new dome sheet needs to be placed between the PWM and light guide.

*Note: In some regions the light guide assembly (which includes the light guide, the metal frame and the domesheet) will be replaced as one part (this is the preferred procedure). The description below is needed, when the domesheet needs to be replaced separately, which is not the preferred procedure.*



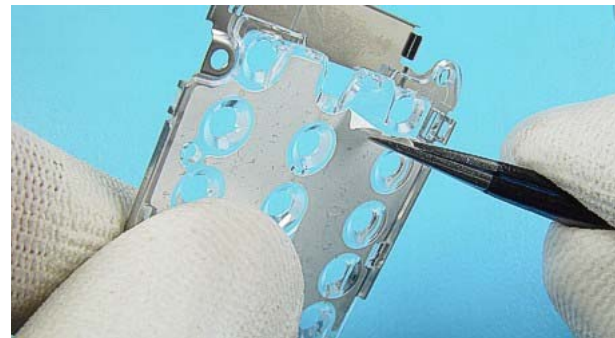
1. Prepare the removal of the LIGHT GUIDE ASSY.



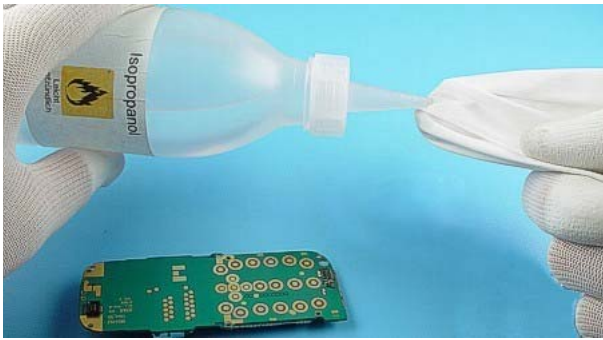
2. When changing the LIGHT GUIDE ASSY use the SRT-6 as a lever. Keep in mind that the DOME SHEET is glued to the ENGINE MODULE.



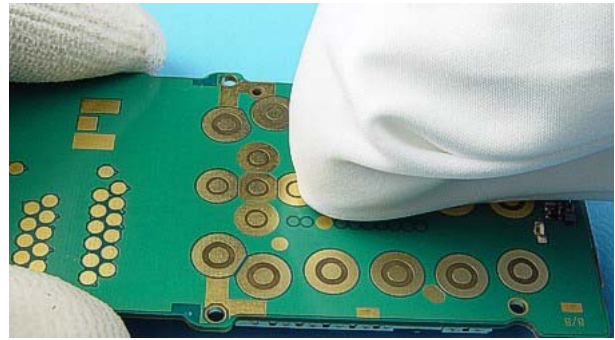
3. Remove the DOME SHEET from the LIGHT GUIDE.



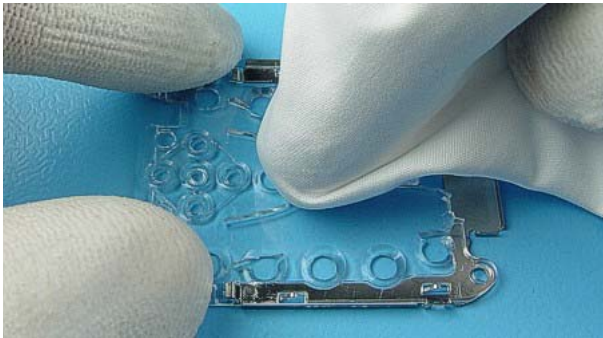
4. Now remove the rest of the DOME SHEET from the LIGHT GUIDE by using e.g. tweezers.  
**Note! Do not scratch the LIGHT GUIDE.**



5. Clean the topside of ENGINE MODULE with Isopropanol and....



6. ... micro fibre cloth to protect the surface. After cleaning place the ENGINE MODULE back to the C-COVER ASSY



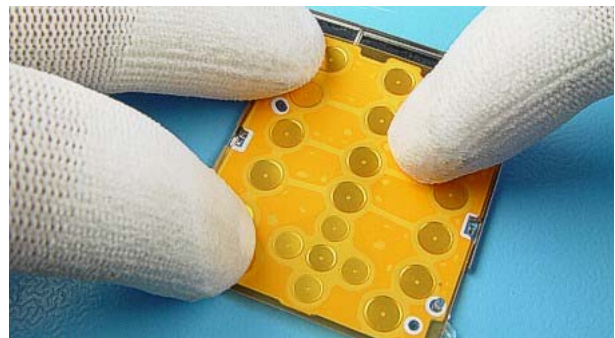
7. Also clean the LIGHT GUIDE.



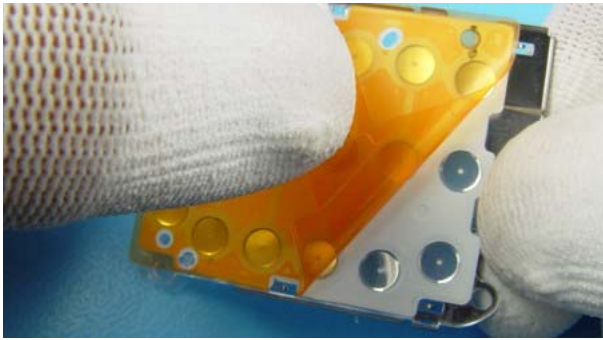
8. Carefully remove the transparent protection foil. Ensure that no residue remains on the transparent foil. **Note! Do not touch the DOME SHEET after removing the foil.**



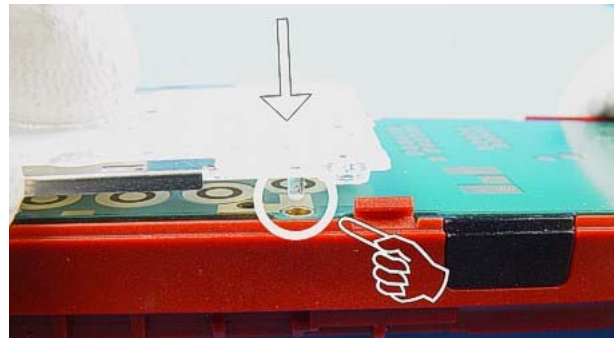
9. Place the DOME SHEET on the LIGHT GUIDE. First fit the hole in the DOME SHEET to the guide pin and place it congruent to the side of the LIGHT GUIDE (**see arrows**).



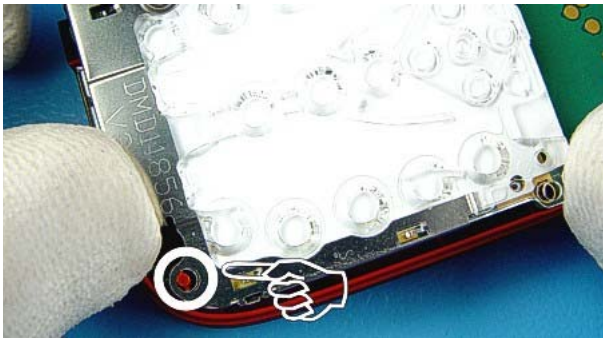
10. Press the DOME SHEET and the LIGHT GUIDE firmly together.



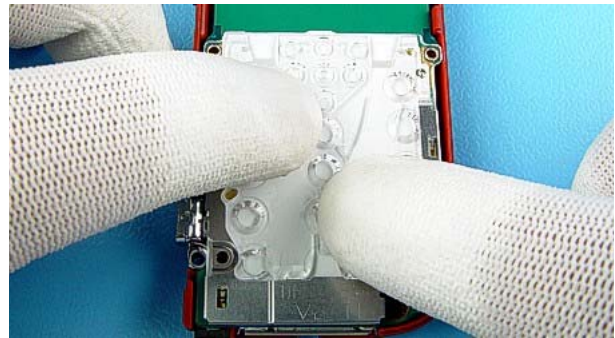
11. Remove the orange protection foil. **Note!** Do not touch the DOME SHEET after removing the foil.



12. Place the guide pin of the LIGHT GUIDE ASSY to the corresponding hole of the ENGINE MODULE and...



13. ...place the hole in the LIGHT GUIDE ASSY to the corresponding guide pin of the C-COVER ASSY.



14. Press the ENGINE MODULE and the LIGHT GUIDE ASSY firmly together at every point to avoid contamination by dust and humidity.



[This page intentionally blank]